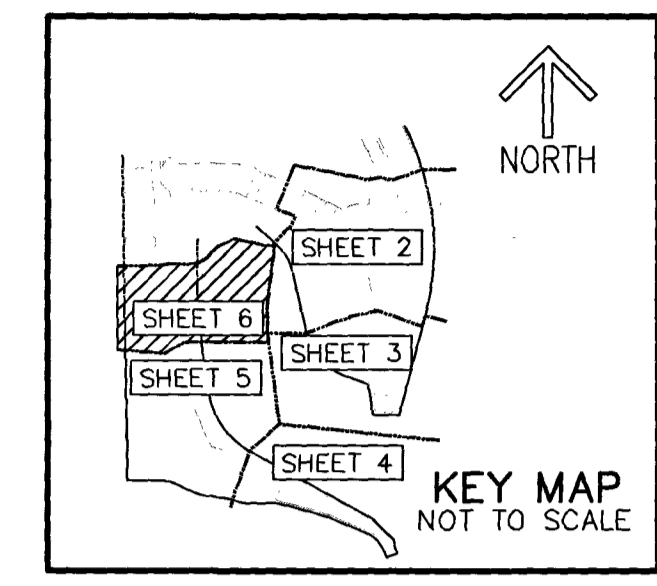


THIS INSTRUMENT PREPARED BY
 DAVID P. LINDLEY
 OF
CAULFIELD & WHEELER, INC.
 SURVEYORS - ENGINEERS - PLANNERS
 7900 GLADES ROAD, SUITE 100
 BOCA RATON, FLORIDA 33434 - (561)392-1991
 CERTIFICATE OF AUTHORIZATION NO. LB3591

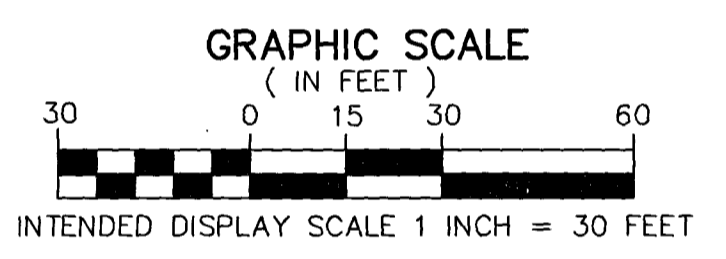
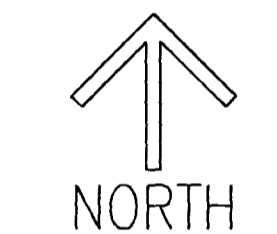
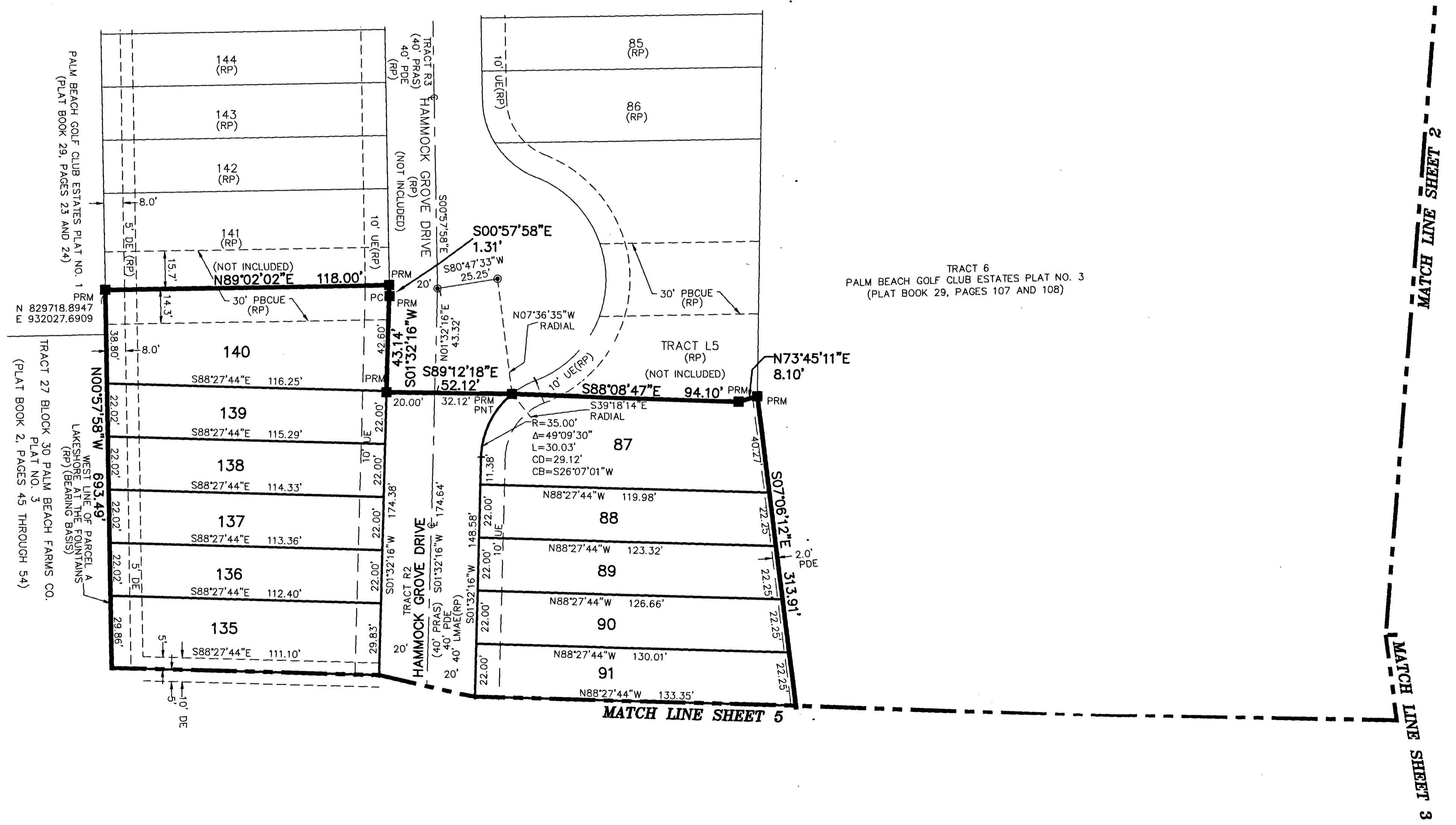
LAKESHORE AT THE FOUNTAINS REPLAT

BEING A REPLAT OF PARCELS A AND B, LAKESHORE AT THE FOUNTAINS,
 AS RECORDED IN PLAT BOOK 135, PAGES 20 THROUGH 28 OF THE PUBLIC RECORDS OF PALM BEACH COUNTY, FLORIDA,
 LYING IN SECTIONS 27 AND 28, TOWNSHIP 44 SOUTH, RANGE 42 EAST, PALM BEACH COUNTY, FLORIDA

96



SHEET 6 OF 6



NOTES
COORDINATES, BEARINGS AND DISTANCES
 COORDINATES SHOWN ARE GRID
 DATUM = NAD 83 (90 ADJUSTMENT)
 ZONE = FLORIDA EAST
 LINEAR UNIT = US SURVEY FEET
 COORDINATE SYSTEM 1983 STATE PLANE
 TRANSVERSE MERCATOR PROJECTION
 ALL DISTANCES ARE GROUND, UNLESS OTHERWISE NOTED
 SCALE FACTOR = 1.0000295
 GROUND DISTANCE X SCALE FACTOR = GRID DISTANCE
 BEARINGS AS SHOWN HEREON ARE GRID DATUM
 NAD 83 (90 ADJUSTMENT), FLORIDA EAST ZONE.

LEGEND/ABBREVIATIONS
 C - CENTERLINE
 Δ - DELTA (CENTRAL ANGLE)
 CB - CHORD BEARING
 CD - CHORD DISTANCE
 E - EASTING (WHEN USED WITH COORDINATES)
 FND - FOUND
 L - ARC LENGTH
 LB - LICENSED BUSINESS
 LMAE - LAKE MAINTENANCE ACCESS EASEMENT
 L.W.D.D. - LAKE WORTH DRAINAGE DISTRICT
 N - NORTHING (WHEN USED WITH COORDINATES)
 O.R.B. - OFFICIAL RECORD BOOK
 PBCUE - PALM BEACH COUNTY UTILITY EASEMENT
 PC - POINT OF CURVATURE
 PDE - PUBLIC DRAINAGE EASEMENT
 PT - POINT OF TANGENCY
 PNT - POINT OF NON-TANGENCY
 (PRAS) - PRIVATE RESIDENTIAL ACCESS STREET
 (P) - PALM BEACH GOLF CLUB ESTATES PLAT NO. 3
 PLAT BOOK 29, PAGES 107-108
 R - RADIUS
 (RP) - LAKESHORE AT THE FOUNTAINS
 PLAT BOOK 135, PAGES 20 THROUGH 28
 (R) - RADIAL LINE
 (RPB) - ROAD PLAT BOOK 1, PAGES 128-135
 ROAD PLAT BOOK 5, PAGES 125-138
 R/W - RIGHT-OF-WAY
 ● PCP - DENOTES PERMANENT CONTROL POINT
 NAIL AND METAL DISK STAMPED "PCP LB3591"
 ■ PRM - DENOTES PERMANENT REFERENCE MONUMENT
 SET 4" x 4" x 24" CONCRETE MONUMENT WITH
 ALUMINUM DISK STAMPED "C&W PRM LB3591"
 ▲ - DENOTES HORIZONTAL CONTROL POINT